



# The Eagle



UV Led series



Made in Italy



[eagleuvled.com](http://eagleuvled.com)

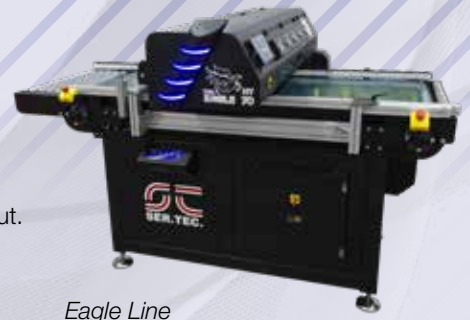
Access the website through your smartphone  
Use the QR Code on the left



## The latest technologies at your service

The Eagle, unlike normal printers, was created to answer to industrial needs of flexible and high quality prints without reduce the output volumes.

The Eagle versatility comes from the **variable height up to 250mm, the unique design** and the high performance UV Led inks that allow to print on almost any material even heat sensitive ones.



Eagle Line

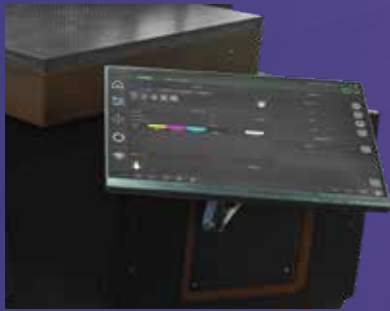


The piezoelectric print head is equipped with a **double water cooled UV Led lamp** to cure the ink during the print without further processing, saving time, money and increasing the output.

**Every Eagle can be customized** to suit the customer needs like the Eagle Line that detect automatically the objects to print

realizing prints with an accurate and constant positioning making it perfect to create a continuous printing line.

To extend the quality and versatility of Eagle to customer who needs large print area we have developed the **XL version of Eagle** with a print width of 70 or 130cm while the print length is customizable from 2,5 to 5 meters.



Touch screen control panel allows you to get an overview of the printer status and be able to perform routine management tasks. Moreover it's possible to directly send one of the previous jobs from the print queue.



**PHPC** system produces uniform prints and ensures that the head installed in the printer is protected from strikes by constantly checking the position.



**IRS** is an innovative system that allows your machine to improve performance through a constant recirculation of white ink that prevents creation of sediment and clogging of the nozzles in the head after long periods of inactivity.

## New Ricoh Gen5 printheads

The new Ricoh Gen 5 industrial print heads have a better performance, more endurance and give better print results thanks to their high resolution. The multi-drop capability allows the creation of a range of drop sizes enabling grey-scale printing and delivering smooth gradations, vibrant colors, a wider color gamut and better prints.



## The Eagle UV Led inks

The inks are very important for any printers. Without a quality ink the printer can't produce high quality prints.

The Eagle has a dedicated UV Led ink that enable the printer to reach photographic quality, with a great color gamut and bright colors.

The ink also is resistant to weather and wearing, allowing their use in any surface even those that will be exposed to weathering ensuring a duration of many years.

The Eagle adopt an open ink system to reduce costs and maintenance; all the inks are on bottles under pressure to avoid air bubbles on the system while the white ink is under constant recirculation to avoid the sedimentation and print head clog.

## WHITERIP - Professional software RIP

A software RIP is very important for an industrial printer like The Eagle, in fact it can manage color profiles and offer optimizations to save time and inks.

The Eagle is equipped with the professional RIP software WhiteRIP with specific functions for industrial object printing to increase output and reduce print time like the completely automatic and optimized white base generation and the print with template.



Optimized whitebase generation

The template function allow to virtually split the table in smaller area named 'panels' to print with a precise and constant positioning. You can easily fill all the panels with the desired images and positions reducing time for preparation of the graphics and reducing wastes of ink and materials due to poor positioning and positioning tests.

WhiteRIP has many more function to increase productivity and versatility of the machine such as Spot channels, hotfolders, color replacement, label creations, Special channel generation and variable data management.

All you need to make the best prints with your Eagle UV machine.





## Wing design



This innovative design allow to have three sides completely open that can be used to load and unload the table. You can remove printed objects and reload the table while the machine is still printing and it's particularly useful when you need to load bulky objects on the print table.

The wing design also allow to load material larger than the print table.

## Applications

With the UV Led technology The Eagle printers can print on almost all materials.

You can produce high quality print on a huge variety of materials and objects.

- Print on wood, plastic, ceramic, paper, metals and many others materials
- Print on rigid and flexible supports
- Create samples that will be identical to production
- Use gloss ink to valorize a part of the graphic or to uniform finish your print
- Print awesome images: the variable dot print head can produce high definition and smooth gradients
- Print color-white-color for two sided images on glass or other transparent materials
- Optional circular object kit to print on cilyndrical objects
- Print with 3D or braille effects



*Bottles*



*Gadgets*



*Packaging*



*Industrial*



*Promotional*



*Banners, advertising displays*



*Glossy effects*



*3D effects*

## The Eagle optionals



### Customization and integration with automations

If your production workflow needs particular operation or you have particular needs for loading and unloading the table we can integrate the Eagle to fully fit your needs.



### Vacuum table

The Eagle printers can be equipped with vacuum table that hold the light materials to the print table.

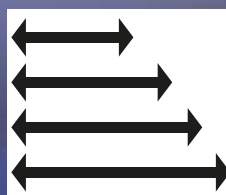
On the XL models vacuum and blowing table is included as standard.



### Retractable Square

The square optional allow to put object in perfect alignment with the print table in a few seconds.

The square is completely retractable to not be an obstacle when loading the table with large objects or sheets.



### Customizable table length

Now you can have the versatility and quality of the Eagle printers with the size that suits your large format printing needs.

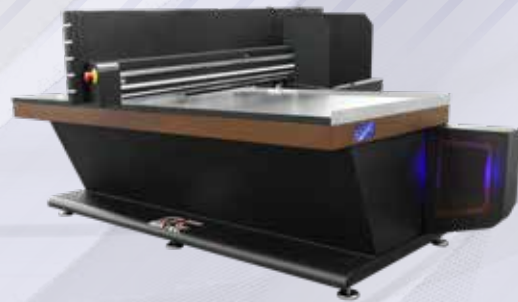
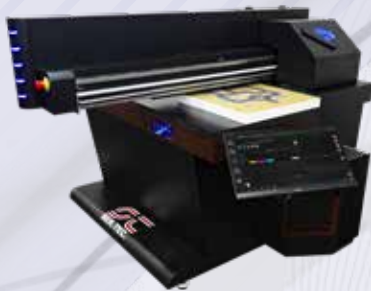
Only on the Eagle XL you can customize the print table length from 2,5 to 5 meters.



### Circular object kit

The circular object kit is easy to mount and allow you to print on a new type of object, without the need to buy new equipment. There are no difference between the flat and the circular object in the printing process: you just put up the kit and load the item to print, then you go just like any other print.

# Technical data



Version		Eagle UV 50 R	Eagle UV 70 R	Eagle UV 130 R	Eagle Line UV 70/130 R	Eagle XL UV 70/130 R
Printing technology		Up to 8 Ricoh Gen 5 printheads				
Resolution	min	300 x 150 dpi				
	max	1200 x 2400 dpi				
Max. printable area	width	700mm		1300mm	700 / 1300mm	700mm / 1300mm
	length	500mm	1500mm	1500mm	-	customizable from 2,5 to 5 meters
Table size	width	750mm		1360mm	700 / 1300mm	750 / 1350mm
	length	550mm	1650mm	1650mm	1500mm	customizable
Max material thickness		250mm				
Table capacity*		25Kg*	100Kg*	150kg*	80kg / 150kg*	120kg / 150kg*
Inks		DPI UV Led				
Available colors		CMYK, White, Glossy				
Interfaces		Ethernet				
Power Supply		AC 240V 50/60Hz				AC 400V 50/60Hz
Operating Environment		20-25° Humidity 35-80% without condensation				
Vacuum table		Optional				Si
Blower table		No	Optional		No	Si
Optionals		Vacuum table, rotary system, customization, integration with automations	Vacuum/blowing table, rotary system, customization, integration with automations		Vacuum belt, rotary system, customization, integration with automations	Rotary system, customization, integration with automations

\* weight evenly distributed

## Our services



### DPI training center

In order to offer its customers a complete assistance service, DPI DG PRINTING organizes technical training courses at its headquarters, an opportunity to learn in depth the potential of your machine and be able to quickly make the most of its characteristics.



### DPI Assistance

The support service is a valuable tool to receive all-round assistance. In order to benefit from it, it's sufficient to connect to our website and request a subscription to the service by filling a web form.



### Creative Lab

Our exhibition area, where imagination and creativity reign supreme, is a place where you can actually realize the potential of our machines and see what is possible to create with them. Our show starts here.

Dealer:



### Dpi Dg Printing S.r.l

Via Emilio Salgari 14/e - 31056 Roncade (TV) - Italy  
 Phone +39 (0)422 798493 - Fax. +39 (0)422 799711  
 e-mail: sales@dpidgprinting.com - Website: dpidgprinting.com



www.facebook.com/sertecsr



www.twitter.com/sertecsr